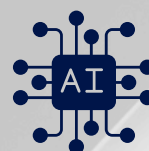
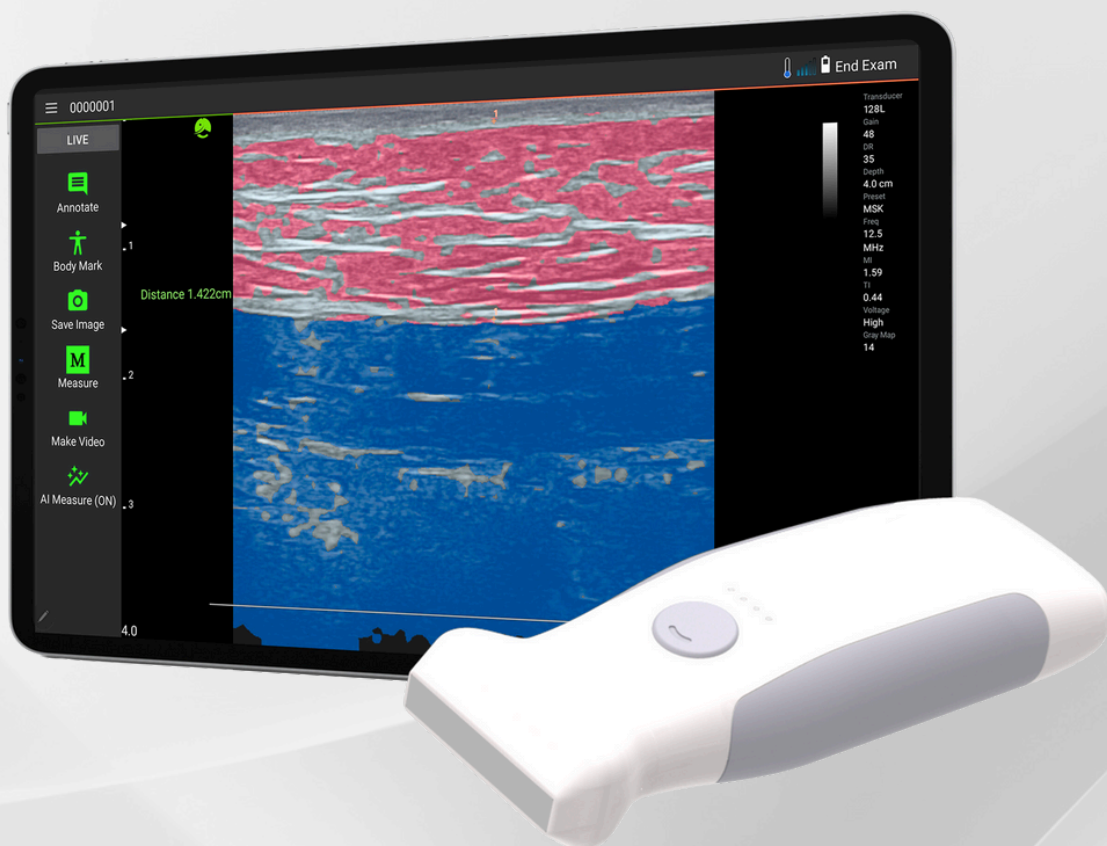


# VioScan L2 Linear Handheld

INFINIUM®



*Precision Care Anytime, Anywhere*  
*Your Portable Ultrasound Solution*

# Ultrasounds

## Infinium VioScan L2 Handheld Linear Ultrasound

A state-of-the-art portable, wireless, linear ultrasound scanning device designed to provide high-quality imaging in a compact, user-friendly package. With its advanced imaging technology, the VioScan L2 delivers clear, detailed ultrasound images to a tablet, mobile device, or PC making it an invaluable tool for medical professionals in various settings.

The device features a lightweight and ergonomic design, ensuring ease of use and mobility, while its intuitive interface allows for quick and efficient scanning operation. Whether used in emergency situations, remote locations, or routine clinical settings, the VioScan L2 offers reliable performance and exceptional image clarity, enhancing diagnostic accuracy and patient care.

- » Quick charging 2hr battery life
- » Seamless DICOM connectivity integration with EMR
- » Fast connection across Windows, iOS, & Android
- » Customize 30+ imaging parameters
- » 15+ preset medical protocols
- » Smart AI Assisted Clinical Support
- » IP67 waterproof unit with a feather-light design
- » 4.2-12.5 MHz bandwidth with 12.6cm penetration



**NO SUBSCRIPTION  
REQUIRED**



# Infinium VioScan L2 *Clinical Applications*



## INTELLIGENT IMAGING

The VioScan L2 Linear features 15 imaging presets for a fast and easy start. The user can also custom set presets can with over 30 imaging parameters. Also featured are integrated AI measurement tools for automatic gain, settings, measurements and calculations.



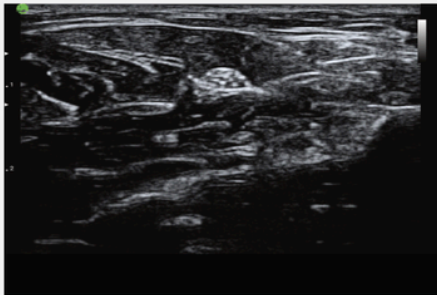
## IMAGING MODES

B-Mode, M-Mode, Color Doppler, PW, and Power Doppler

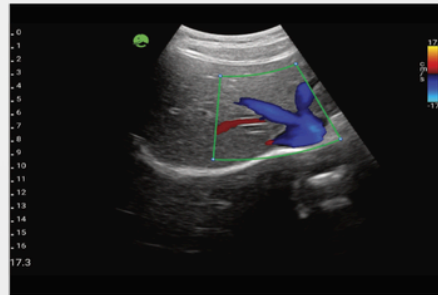


## CLINICAL APPLICATIONS

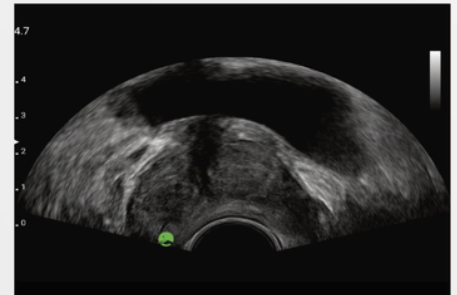
Carotid Artery, Breast, MSK, Thyroid, Ocular, Nerves, Peripheral Vessels, General Abdominal, Musculoskeletal, Needle/Catheter Guidance



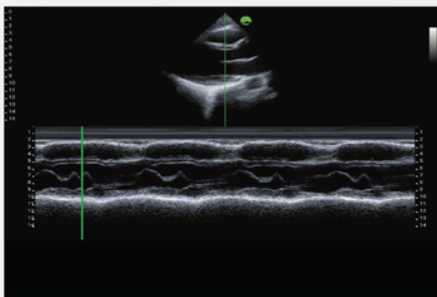
Median Nerve, B mode



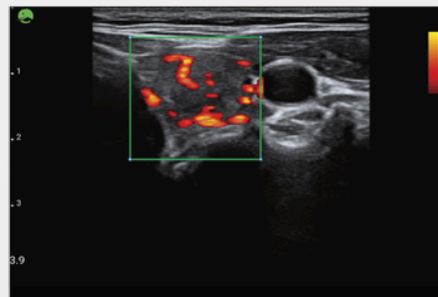
Hepatic Vein, Color doppler



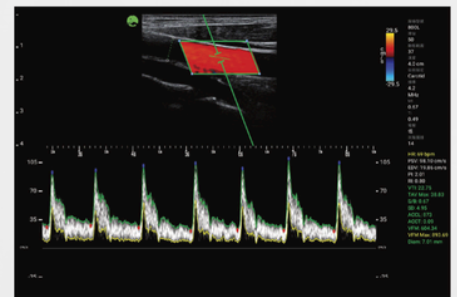
Prostate, B mode



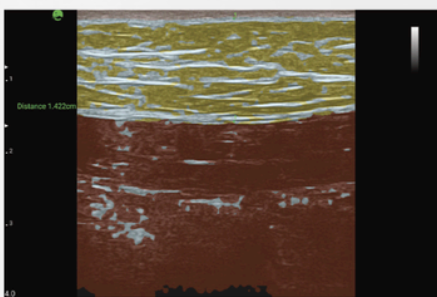
Heart, M mode



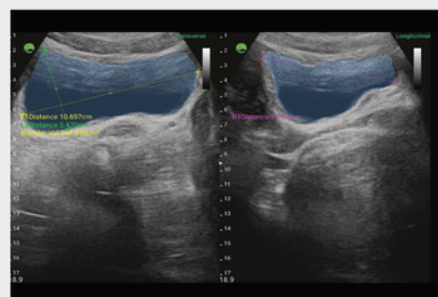
Thyroid, Power doppler



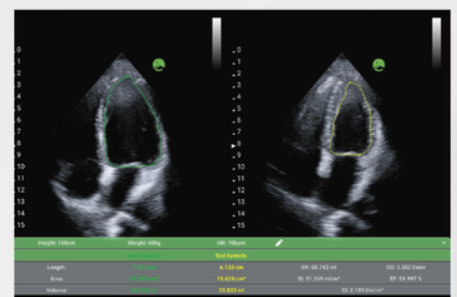
Carotid, Pulsed wave



AI Fat, B mode



AI Bladder, B mode



AI EF, B mode

# VioScan L2 Linear Handheld Ultrasound Specifications



**In The Box**



**15+ Preset Medical Protocols**



**Optional VioScan Series Cradle**

Frequency Bandwidth 4.2-12.5 MHZ  
 Max Depth 4.96 in  
 Field of View 60 Degrees  
 Pitch 0.0118 in  
 Elevation Focus .79 in  
 Weight 0.49 lbs

Battery Life 2+ Hours  
 Battery Charge Time 1 hour (5V/3A)  
 Charging Cable USB3 Type C

Image Modes Dual B, M, Color Doppler, Power Doppler, Pulsed Wave

Connectivity 802.11 a/b/g/n 2.4G & 5G

Peripheral Devices Smartphone, Tablet, Laptop, PC

Operating Systems iOS, Android, Windows

DICOM DICOM 3.0

Waterproof IP67 Tested

Subscription None

## INFINIUM®

Infinium Medical  
 12151 62nd St North #5  
 Largo, FL 33773 • USA

☎ (1) 866-918-8434  
 🌐 [infiniummedical.com](http://infiniummedical.com)  
 ✉ [sale@infiniummedical.com](mailto:sale@infiniummedical.com)