

# INFINIUM<sup>®</sup>

## VIOSCAN<sup>™</sup> Portable Bladder Scanner

**Easy to Use**  
**Safe & Reliable**  
**Automatic PVR**  
**Highly Accurate**

**Improved 128 Sensor Array**

**MODERN DATA & PRINTING**



Bluetooth



**NEW**

**2026  
UPDATE**



**Touch Screen**



**High Accuracy**



**Fast 3-Second Analysis**

# VioScan™ Bladder Scanner

## Portable & Precise

### 10.3" Touch Screen

**Superior Precision:** Featuring a single motor and 128 sensors, the PBS V 7.1 delivers precise, electronic bladder contour focusing, achieving an error margin of  $\leq 5\%$ .

**Fast Performance:** With measurements completed in just 3 seconds, the PBS V 7.1 enhances clinical efficiency without compromising on accuracy.

**Enhanced Durability:** The single-motor design reduces friction, increasing the product's longevity and reducing maintenance needs.

**Safety and Reliability:** Equipped with negative pressure technology and passed rigorous drop test, the PBS V 7.1 ensures greater reliability and safer use for healthcare professionals.

The Infinium VioScan is engineered to improve accuracy, speed, and reliability, making it an essential tool for modern medical practices.



3 Second Scan Results



## Designed for Practitioners



Intuitive touch interface, clear visual guidance, and minimal steps from scan to result.

The result? Faster measurement, reduced training time, and a smoother workflow for hospital staff.

# VioScan™ Features & Applications

## FEATURES

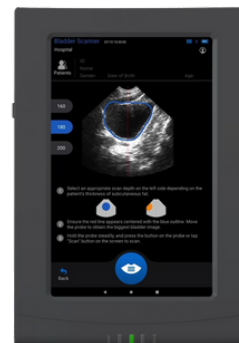
Highly Accurate	Achieves $\pm 5\%$ or $\pm 5$ mL precision for reliable measurements with a 128-sensor probe and single-motor design for electronic bladder contour focusing.
Rapid Results	3-second bladder volume via automated 3D imaging saving valuable time.
Adjustable Depths	Offers 160 mm (6.3 in), 180 mm (7.1 in), or 200 mm (7.9 in) depths, selectable via on-screen depth icons. This helps with variable patient anatomy.
Gender-Neutral	Automatically adjusts for all patients, eliminating gender-specific settings.
Data Integration	Supports QR code/barcode scanning for patient data entry and Wi-Fi/Bluetooth transmission to HL7 or EHR systems. This reduces errors supports HIPAA.
Wireless Printing	Compatible with Wi-Fi and Bluetooth printers for instant reports.
Intuitive Interface	Features a 10.3-inch tablet touchscreen with clear guidance & minimal steps.
Durability and Safety	Excellent reliability from a single-motor design that minimizes friction for a longer lifespan. Offers negative pressure technology and drop-test certification.
High-Capacity Storage	Stores up to 10,000 cases with patient IDs up to 18 digits.
Portability	Compact (14.4 in $\times$ 8.2 in $\times$ 2.1 in) and powered by a rechargeable lithium-ion battery. Enables use in outpatient and remote settings.
Versatile Scan Modes	Supports human and phantom modes for clinical use, calibration, and training.

## APPLICATIONS

Bladder Management	Supports intermittent catheterization (IC) protocols with bladder volume data for precise timing. Prevents overdistension, reduces UTIs, enhances bladder health.
Gynecologic Nursing and ERAS Protocols	Shorter recovery and Enhanced Recovery After Surgery (ERAS) by reducing unnecessary catheterizations and monitoring post-catheter residual volumes.
Pelvic Radiotherapy Preparation	Ensures consistent bladder filling for precise radiation dosing via a standardized protocol. Improves accuracy & minimizes radiation exposure to adjacent organs.
Urology and Post-Operative Care	Monitors bladder function non-invasively to guide interventions and assess urinary retention without complications.
Emergency and Community Care	Portable design enables bedside and outpatient assessments for rapid diverse diagnostics outside of a hospital setting.
Preventive Care	Proactive bladder management, reducing unnecessary procedures.

# VioScan™ Specifications

Probe Type	3D ultrasound probe
Probe Frequency	3.5 MHz
Volume Measurement	0-2000 mL
Accuracy	±5% or ±5 mL
Scanning Depths	160 mm (6.3 in), 180 mm (7.1 in), 200 mm (7.9 in)
Measurement Time	3 seconds
Display	10.3-inch tablet touchscreen
Power Source	Rechargeable lithium-ion battery
Patient ID Capacity	Up to 18 digits
Storage Capacity	10,000 cases
Scan Modes	Human and phantom
Connectivity	Wi-Fi and Bluetooth for data transmission and printing
Device Dimensions	365 mm (L) × 208 mm (W) × 54 mm (H) / 14.4 in (L) × 8.2 in (W) × 2.1 in (H)
Warranty	2 years standard; optional 1-year extension



**Cart**  
*Optional*



**Adaptor**  
*Included*



**Bluetooth Printer**  
*\*Optional*



**Printer Paper**  
*\*Optional*