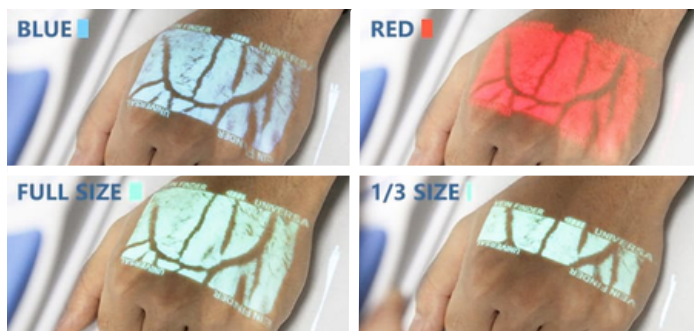


VS 400™

Infrared Vein Viewer

The VS 400™ Vein Viewer projects near-infrared light with no radiation. The near-infrared light is absorbed by the blood but reflected by the surrounding tissue to present a clear image of a patient's vein pattern.



Color & Size Tuning

The VS 400™ has 5 color & 3 size projection settings to best fit the patient and environment.

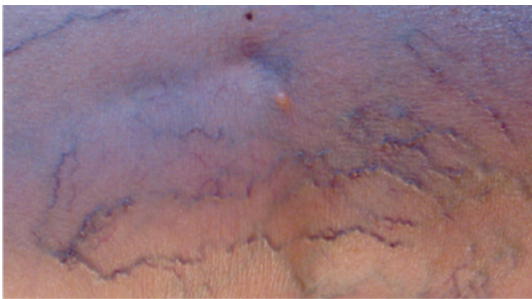
Infinium VS 400™ Vein Viewer

CLINICAL APPLICATIONS



Venipuncture

Assists in finding a suitable vein for venipuncture efficiently & accurately.



Vascular Procedures

Identifies deeper veins and assists in the treatment of spider veins.



Cosmetic Procedures

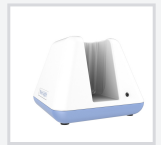
Locates and avoids veins during procedures to minimize bruising and possible migration of the injected fluids.

FEATURES

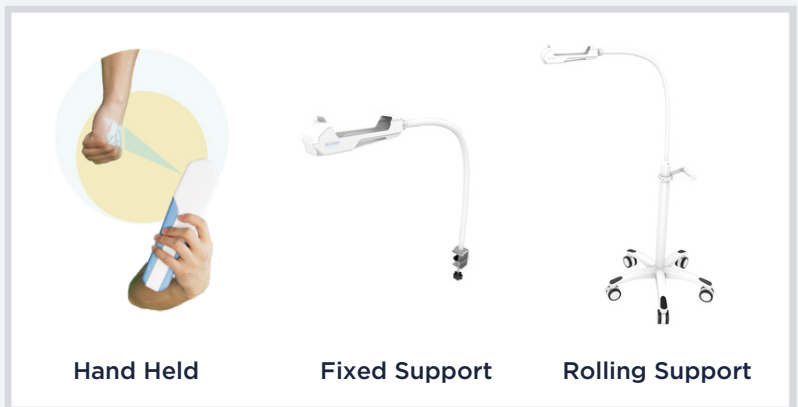
- High resolution imaging
- 5 color modes for different skin tones
- 3 projection sizes
- Long life rechargeable battery
- Fixed and mobile support arms available

Charging Dock Standard

The Infinium VS 400™ comes standard with a convenient charging dock.



USAGE OPTIONS & SUPPORTS



SPECIFICATIONS

LIGHT TYPE
Near-infrared light

WAVELENGTHS
850 nm

IMAGE RESOLUTION
720*480 VISIBLE

VEIN SIZE
≥1mm

ACCURACY
0.25mm

VISIBLE VEIN DEPTH
≤12mm

BEST PROJECTION DISTANCE
18 to 22 cm

IMAGE FRAME RATE
20FPS

LED LIFETIME
20000 hours

POWER SUPPLY
DC 5V ≤3.5W

WEIGHT
450g

DIMENSION
240x60x60mm (LxWxH)

BATTERY VOLUME
4400mAH BATTERY

WORKING TIME
5 hours

CHARGING TIME
3 hours

DETACHABLE

INFINIUM®

Infinium Medical
12151 62nd St North #5
Largo, FL 33773 • USA

+1 727-531-8434
infiniummedical.com
sales@infiniummedical.com